

5

$$(x^2y - 3y^2 + 5xy^2) - (-x^2y + 3xy^2 - 3y^2)$$

Which of the following is equivalent to the expression above?

- A) $4x^2y^2$
- B) $8xy^2 - 6y^2$
- C) $2x^2y + 2xy^2$
- D) $2x^2y + 8xy^2 - 6y^2$

7 Also Used as Analysis in History/Social Studies

$$m = \frac{\left(\frac{r}{1,200}\right)\left(1 + \frac{r}{1,200}\right)^N}{\left(1 + \frac{r}{1,200}\right)^N - 1} P$$

The formula above gives the monthly payment m needed to pay off a loan of P dollars at r percent annual interest over N months. Which of the following gives P in terms of m , r , and N ?

- A) $P = \frac{\left(\frac{r}{1,200}\right)\left(1 + \frac{r}{1,200}\right)^N}{\left(1 + \frac{r}{1,200}\right)^N - 1} m$
- B) $P = \frac{\left(1 + \frac{r}{1,200}\right)^N - 1}{\left(\frac{r}{1,200}\right)\left(1 + \frac{r}{1,200}\right)^N} m$
- C) $P = \left(\frac{r}{1,200}\right) m$
- D) $P = \left(\frac{1,200}{r}\right) m$

8

If $\frac{a}{b} = 2$, what is the value of $\frac{4b}{a}$?

- A) 0
- B) 1
- C) 2
- D) 4

10

$$g(x) = ax^2 + 24$$

For the function g defined above, a is a constant and $g(4) = 8$. What is the value of $g(-4)$?

- A) 8
- B) 0
- C) -1
- D) -8

13

If $x > 3$, which of the following is equivalent

to $\frac{1}{\frac{1}{x+2} + \frac{1}{x+3}}$?

- A) $\frac{2x+5}{x^2+5x+6}$
- B) $\frac{x^2+5x+6}{2x+5}$
- C) $2x+5$
- D) x^2+5x+6

14

If $3x - y = 12$, what is the value of $\frac{8^x}{2^y}$?

- A) 2^{12}
- B) 4^4
- C) 8^2
- D) The value cannot be determined from the information given.

15

If $(ax + 2)(bx + 7) = 15x^2 + cx + 14$ for all values of x , and $a + b = 8$, what are the two possible values for c ?

- A) 3 and 5
- B) 6 and 35
- C) 10 and 21
- D) 31 and 41

16

If $t > 0$ and $t^2 - 4 = 0$, what is the value of t ?

20

If $a = 5\sqrt{2}$ and $2a = \sqrt{2x}$, what is the value of x ?

$$a = 1,052 + 1.08t$$

The speed of a sound wave in air depends on the air temperature. The formula above shows the relationship between a , the speed of a sound wave, in feet per second, and t , the air temperature, in degrees Fahrenheit ($^{\circ}\text{F}$).

9 Also Used as Analysis in Science

Which of the following expresses the air temperature in terms of the speed of a sound wave?

- A) $t = \frac{a - 1,052}{1.08}$
- B) $t = \frac{a + 1,052}{1.08}$
- C) $t = \frac{1,052 - a}{1.08}$
- D) $t = \frac{1.08}{a + 1,052}$

25 Also Used as Analysis in Science

$$h = -4.9t^2 + 25t$$

The equation above expresses the approximate height h , in meters, of a ball t seconds after it is launched vertically upward from the ground with an initial velocity of 25 meters per second. After approximately how many seconds will the ball hit the ground?

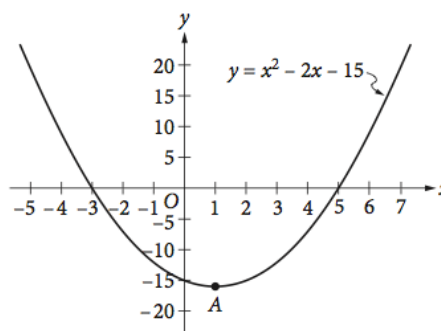
- A) 3.5
- B) 4.0
- C) 4.5
- D) 5.0

29

For a polynomial $p(x)$, the value of $p(3)$ is -2 . Which of the following must be true about $p(x)$?

- A) $x - 5$ is a factor of $p(x)$.
- B) $x - 2$ is a factor of $p(x)$.
- C) $x + 2$ is a factor of $p(x)$.
- D) The remainder when $p(x)$ is divided by $x - 3$ is -2 .

30



Which of the following is an equivalent form of the equation of the graph shown in the xy -plane above, from which the coordinates of vertex A can be identified as constants in the equation?

- A) $y = (x + 3)(x - 5)$
- B) $y = (x - 3)(x + 5)$
- C) $y = x(x - 2) - 15$
- D) $y = (x - 1)^2 - 16$

36

$$h(x) = \frac{1}{(x - 5)^2 + 4(x - 5) + 4}$$

For what value of x is the function h above undefined?

Questions 37 and 38 refer to the following information.

Jessica opened a bank account that earns 2 percent interest compounded annually. Her initial deposit was \$100, and she uses the expression $\$100(x)^t$ to find the value of the account after t years.

37 Also Used as Analysis in History/Social Studies

What is the value of x in the expression?

38 Also Used as Analysis in History/Social Studies

Jessica's friend Tyshaun found an account that earns 2.5 percent interest compounded annually. Tyshaun made an initial deposit of \$100 into this account at the same time Jessica made a deposit of \$100 into her account. After 10 years, how much more money will Tyshaun's initial deposit have earned than Jessica's initial deposit? (Round your answer to the nearest cent and ignore the dollar sign when gridding your response.)