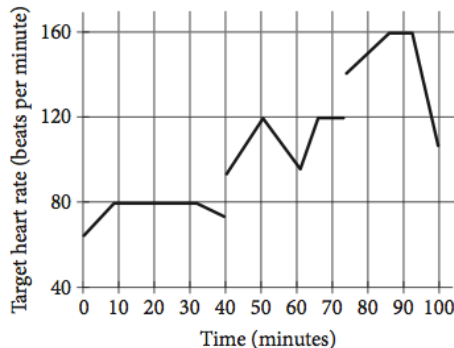


No Calculator = none

With Calculator = all

1

John runs at different speeds as part of his training program. The graph shows his target heart rate at different times during his workout. On which interval is the target heart rate strictly increasing then strictly decreasing?



- A) Between 0 and 30 minutes
- B) Between 40 and 60 minutes
- C) Between 50 and 65 minutes
- D) Between 70 and 90 minutes

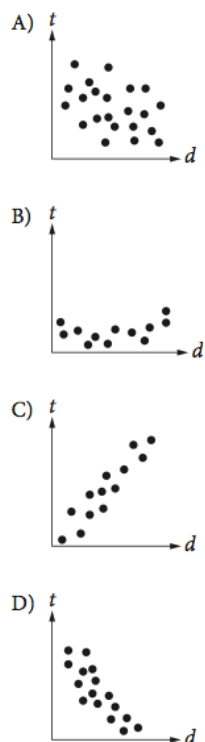
2

If $y = kx$, where k is a constant, and $y = 24$ when $x = 6$, what is the value of y when $x = 5$?

- A) 6
- B) 15
- C) 20
- D) 23

5

Which of the following graphs best shows a strong negative association between d and t ?



6

Also Used as Analysis in Science

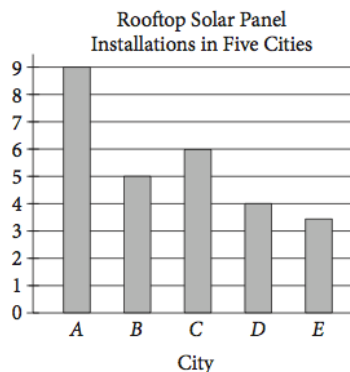
1 decagram = 10 grams
1,000 milligrams = 1 gram

A hospital stores one type of medicine in 2-decagram containers. Based on the information given in the box above, how many 1-milligram doses are there in one 2-decagram container?

- A) 0.002
- B) 200
- C) 2,000
- D) 20,000

7

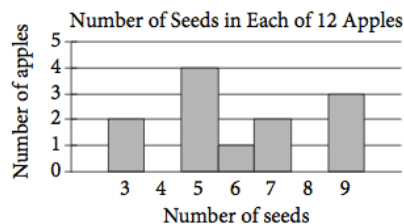
Also Used as Analysis in History/Social Studies



The number of rooftops with solar panel installations in 5 cities is shown in the graph above. If the total number of installations is 27,500, what is an appropriate label for the vertical axis of the graph?

- A) Number of installations (in tens)
- B) Number of installations (in hundreds)
- C) Number of installations (in thousands)
- D) Number of installations (in tens of thousands)

12



Based on the histogram above, of the following, which is closest to the average (arithmetic mean) number of seeds per apple?

- A) 4
- B) 5
- C) 6
- D) 7

13

		Course			Total
		Algebra I	Geometry	Algebra II	
Gender	Female	35	53	62	150
	Male	44	59	57	160
	Total	79	112	119	310

A group of tenth-grade students responded to a survey that asked which math course they were currently enrolled in. The survey data were broken down as shown in the table above. Which of the following categories accounts for approximately 19 percent of all the survey respondents?

- A) Females taking Geometry
- B) Females taking Algebra II
- C) Males taking Geometry
- D) Males taking Algebra I

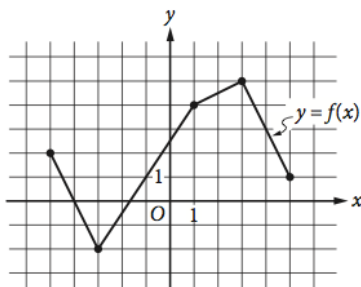
14 Also Used as Analysis in Science

Lengths of Fish (in inches)						
8	9	9	9	10	10	11
11	12	12	12	12	13	13
13	14	14	15	15	16	24

The table above lists the lengths, to the nearest inch, of a random sample of 21 brown bullhead fish. The outlier measurement of 24 inches is an error. Of the mean, median, and range of the values listed, which will change the most if the 24-inch measurement is removed from the data?

- A) Mean
- B) Median
- C) Range
- D) They will all change by the same amount.

17



The complete graph of the function f is shown in the xy -plane above. For what value of x is the value of $f(x)$ at its minimum?

- A) -5
- B) -3
- C) -2
- D) 3

20

Alma bought a laptop computer at a store that gave a 20 percent discount off its original price. The total amount she paid to the cashier was p dollars, including an 8 percent sales tax on the discounted price. Which of the following represents the original price of the computer in terms of p ?

- A) $0.88p$
- B) $\frac{p}{0.88}$
- C) $(0.8)(1.08)p$
- D) $\frac{p}{(0.8)(1.08)}$

21 Also Used as Analysis in Science

Dreams Recalled during One Week

	None	1 to 4	5 or more	Total
Group X	15	28	57	100
Group Y	21	11	68	100
Total	36	39	125	200

The data in the table above were produced by a sleep researcher studying the number of dreams people recall when asked to record their dreams for one week. Group X consisted of 100 people who observed early bedtimes, and Group Y consisted of 100 people who observed later bedtimes. If a person is chosen at random from those who recalled at least 1 dream, what is the probability that the person belonged to Group Y?

- A) $\frac{68}{100}$
- B) $\frac{79}{100}$
- C) $\frac{79}{164}$
- D) $\frac{164}{200}$

Questions 22 and 23 refer to the following information.

Annual Budgets for Different Programs in Kansas, 2007 to 2010

Program	Year			
	2007	2008	2009	2010
Agriculture/natural resources	373,904	358,708	485,807	488,106
Education	2,164,607	2,413,984	2,274,514	3,008,036
General government	14,347,325	12,554,845	10,392,107	14,716,155
Highways and transportation	1,468,482	1,665,636	1,539,480	1,773,893
Human resources	4,051,050	4,099,067	4,618,444	5,921,379
Public safety	263,463	398,326	355,935	464,233

The table above lists the annual budget, in thousands of dollars, for each of six different state programs in Kansas from 2007 to 2010.

22 Also Used as Analysis in History/Social Studies

Which of the following best approximates the average rate of change in the annual budget for agriculture/natural resources in Kansas from 2008 to 2010?

- A) \$50,000,000 per year
- B) \$65,000,000 per year
- C) \$75,000,000 per year
- D) \$130,000,000 per year

23 Also Used as Analysis in History/Social Studies

Of the following, which program's ratio of its 2007 budget to its 2010 budget is closest to the human resources program's ratio of its 2007 budget to its 2010 budget?

- A) Agriculture/natural resources
- B) Education
- C) Highways and transportation
- D) Public safety

26 Also Used as Analysis in Science

Katarina is a botanist studying the production of pears by two types of pear trees. She noticed that Type A trees produced 20 percent more pears than Type B trees did. Based on Katarina's observation, if the Type A trees produced 144 pears, how many pears did the Type B trees produce?

- A) 115
- B) 120
- C) 124
- D) 173

27 Also Used as Analysis in Science

A square field measures 10 meters by 10 meters. Ten students each mark off a randomly selected region of the field; each region is square and has side lengths of 1 meter, and no two regions overlap. The students count the earthworms contained in the soil to a depth of 5 centimeters beneath the ground's surface in each region. The results are shown in the table below.

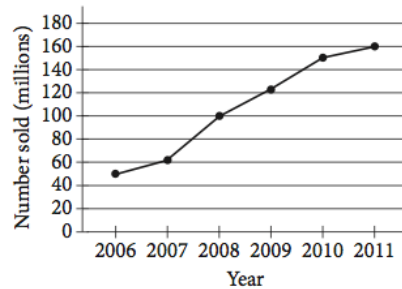
Region	Number of earthworms	Region	Number of earthworms
A	107	F	141
B	147	G	150
C	146	H	154
D	135	I	176
E	149	J	166

Which of the following is a reasonable approximation of the number of earthworms to a depth of 5 centimeters beneath the ground's surface in the entire field?

- A) 150
- B) 1,500
- C) 15,000
- D) 150,000

33 Also Used as Analysis in History/Social Studies

Number of Portable Media Players Sold Worldwide Each Year from 2006 to 2011



According to the line graph above, the number of portable media players sold in 2008 is what fraction of the number sold in 2011?

34

A local television station sells time slots for programs in 30-minute intervals. If the station operates 24 hours per day, every day of the week, what is the total number of 30-minute time slots the station can sell for Tuesday and Wednesday?