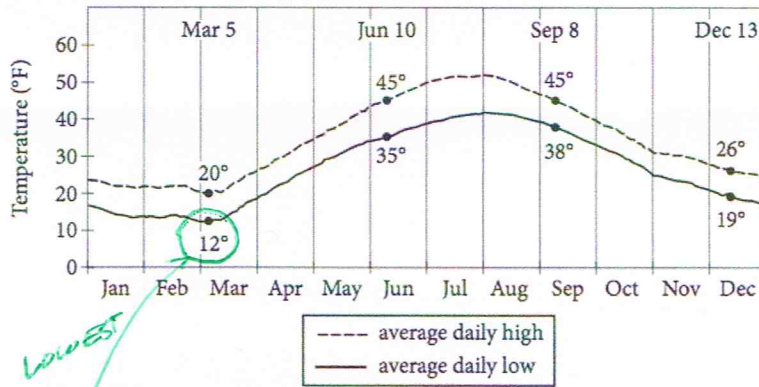


Science Passage

Questions 12-22 are based on the following passage and supplementary material.

Average Daily High and Low Temperatures Recorded at Nuuk Weather Station, Greenland (1961–1990)



Adapted from WMO. ©2014 by World Meteorological Organization.

Dark Snow

Most of Greenland’s interior is covered by a thick layer of ice and compressed snow known as the Greenland Ice Sheet. The size of the ice sheet fluctuates seasonally: in summer, average daily high temperatures in Greenland can rise to slightly above 50 degrees Fahrenheit, partially melting the ice; in the winter, the sheet thickens as additional snow falls, and average daily low temperatures can drop **12** to as low as 20 degrees.

Typically, the ice sheet begins to show evidence of thawing in late **13** summer. This follows several weeks of higher temperatures. **14** For example, in the summer of 2012, virtually the entire Greenland Ice Sheet underwent thawing at or near its surface by mid-July, the earliest date on record. Most scientists looking for the causes of the Great Melt of 2012 have focused exclusively on rising temperatures. The summer of 2012 was the warmest in 170 years, records show. But Jason **15** Box, an associate professor of geology at Ohio State believes that another factor added to the early **16** thaw; the “dark snow” problem.

12 AIS EOI COE

Which choice most accurately and effectively represents the information in the graph?

- A) NO CHANGE
- B) to 12 degrees Fahrenheit.**
- C) to their lowest point on December 13.
- D) to 10 degrees Fahrenheit and stay there for months.

13 AIS EOI WIC

Which choice most effectively combines the two sentences at the underlined portion?

- A) summer, following**
- B) summer, and this thawing follows *WORDY*
- C) summer, and such thawing follows *WORDY*
- D) summer and this evidence follows *COMMA RULES*

CONTINUITY IN CONTEXT

14 AIS EOI

- A) NO CHANGE
- B) However, CONTRAST**
- C) As such,
- D) Moreover,

READ SENTENCES BEFORE - DURING - AND NEXT

COMMA RULES

15 SEC

- A) NO CHANGE
- B) Box an associate professor of geology at Ohio State,
- C) Box, an associate professor of geology at Ohio State,**
- D) Box, an associate professor of geology, at Ohio State

COLON RULES

16 SEC

- A) NO CHANGE
- B) thaw; and it was
- C) thaw:**
- D) thaw: ~~being~~

According to Box, a leading Greenland expert, tundra fires in 2012 from as far away as North America produced great amounts of soot, some **17** of it drifted over Greenland in giant plumes of smoke and then **18** fell as particles onto the ice sheet. Scientists have long known that soot particles facilitate melting by darkening snow and ice, limiting **19** its ability to reflect the Sun's rays. As Box explains, "Soot is an extremely powerful light absorber. It settles over the ice and captures the Sun's heat." The result is a self-reinforcing cycle. As the ice melts, the land and water under the ice become exposed, and since land and water are darker than snow, the surface absorbs even more heat, which **20** is related to the rising temperatures.

ICE MELTS MORE!
= CYCLE

[1] Box's research is important because the fires of 2012 may not be a one-time phenomenon. [2] According to scientists, rising Arctic temperatures are making northern latitudes greener and thus more fire prone. [3] The pattern Box observed in 2012 may repeat **21** itself again, with harmful effects on the Arctic ecosystem. [4] Box is currently organizing an expedition to gather this crucial information. [5] The next step for Box and his team is to travel to Greenland to perform direct sampling of the ice in order to determine just how much the soot is contributing to the melting of the ice sheet. [6] Members of the public will be able to track his team's progress—and even help fund the expedition—through a website Box has created. **22**

PRONOUN AND COMMA RULES

17 SEC

- A) NO CHANGE
- B) soot
- C) of which
- D) DELETE the underlined portion.

VERB TENSE / PARALLELISM

18 SEC

- A) NO CHANGE
- B) falls
- C) will fall
- D) had fallen

PRONOUN / ANTECEDENT

19 SEC

- A) NO CHANGE
- B) its
- C) there
- D) their

USE ANSWERS FOR CLUES: SINGULAR OR PLURAL

CONTINUITY: IN CONTEXT

20 AIS EOI COE

Which choice best completes the description of a self-reinforcing cycle?

- A) NO CHANGE
- B) raises the surface temperature.
- C) begins to cool at a certain point.
- D) leads to additional melting.

REDUNDANCY

21 AIS EOI WIC

- A) NO CHANGE REPEAT = AGAIN
- B) itself,
- C) itself, with damage and -HARMFUL EFFECTS
- D) itself possibly, = MAY

CONTINUITY: IN CONTEXT

22 AIS EOI

To make this paragraph most logical, sentence 4 should be placed

- A) where it is now.
- B) after sentence 1.
- C) after sentence 2.
- D) after sentence 5.